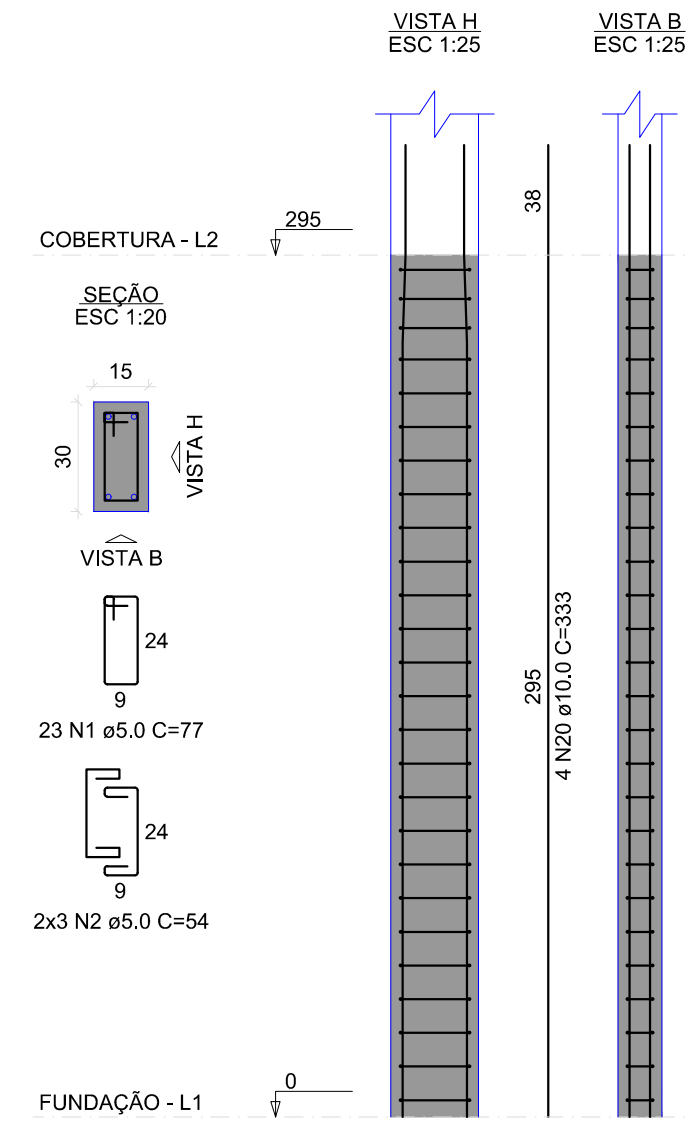


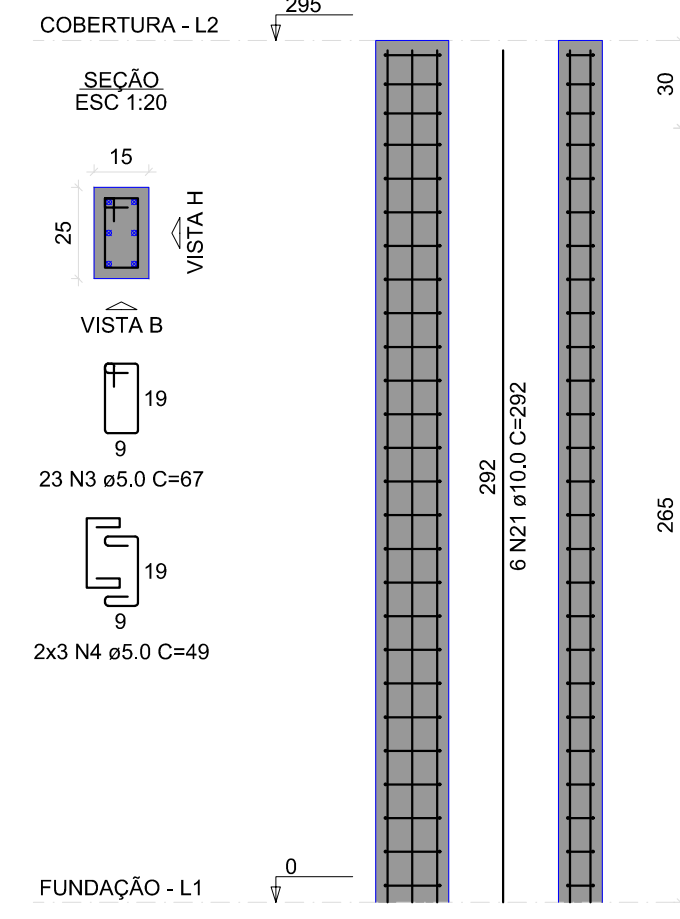
P1=P2=P3=P5=P10=P11=
=P15=P17=P23=P27=P33=
=P34



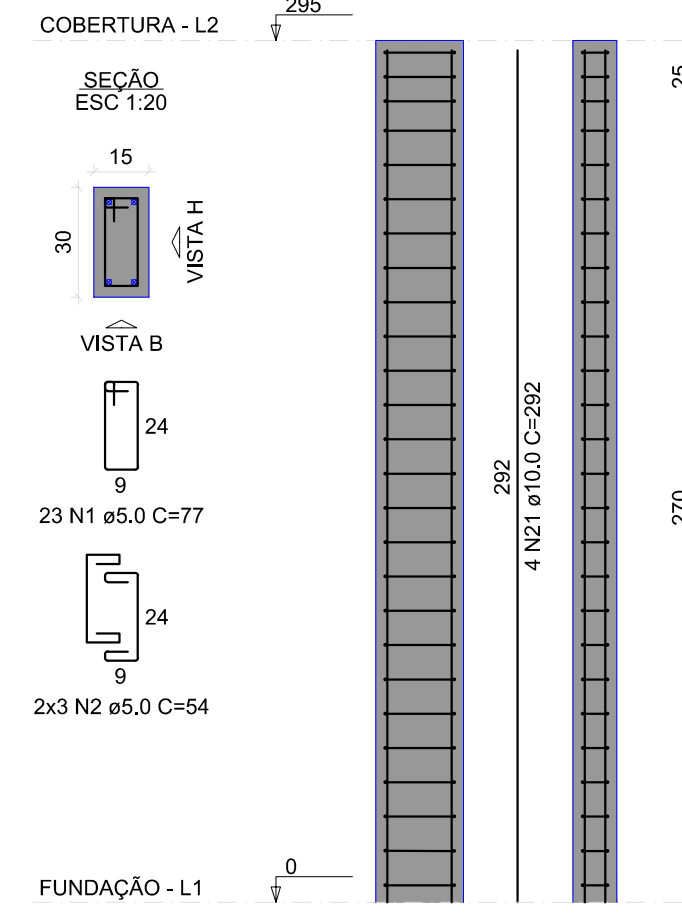
P4=P18=P25



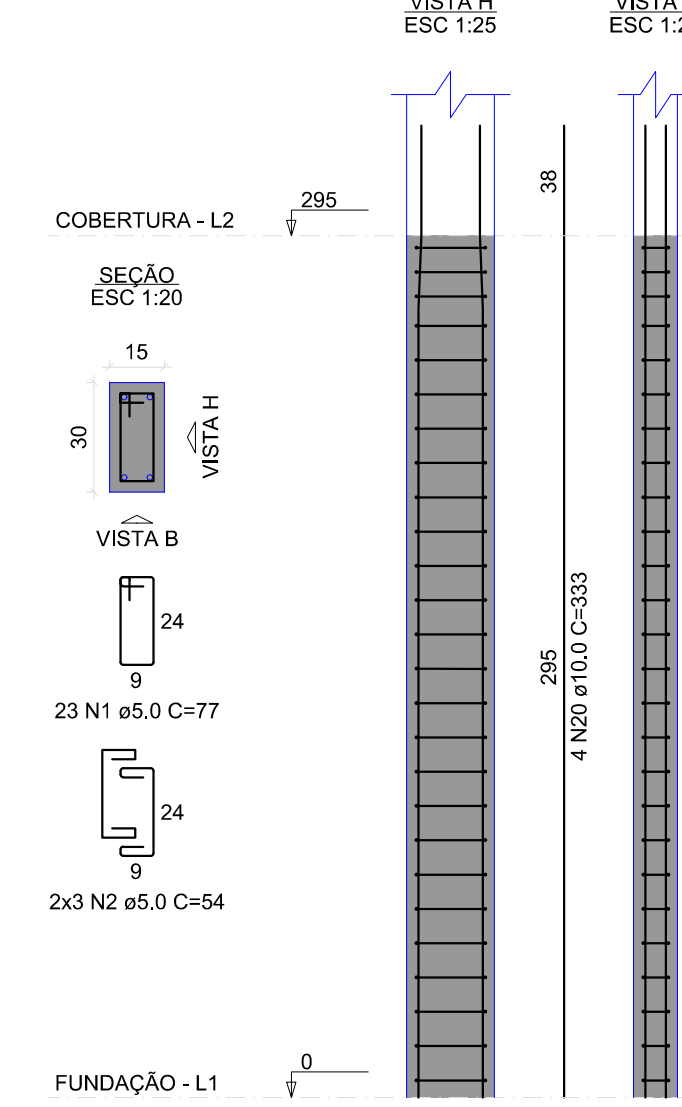
P6=P22



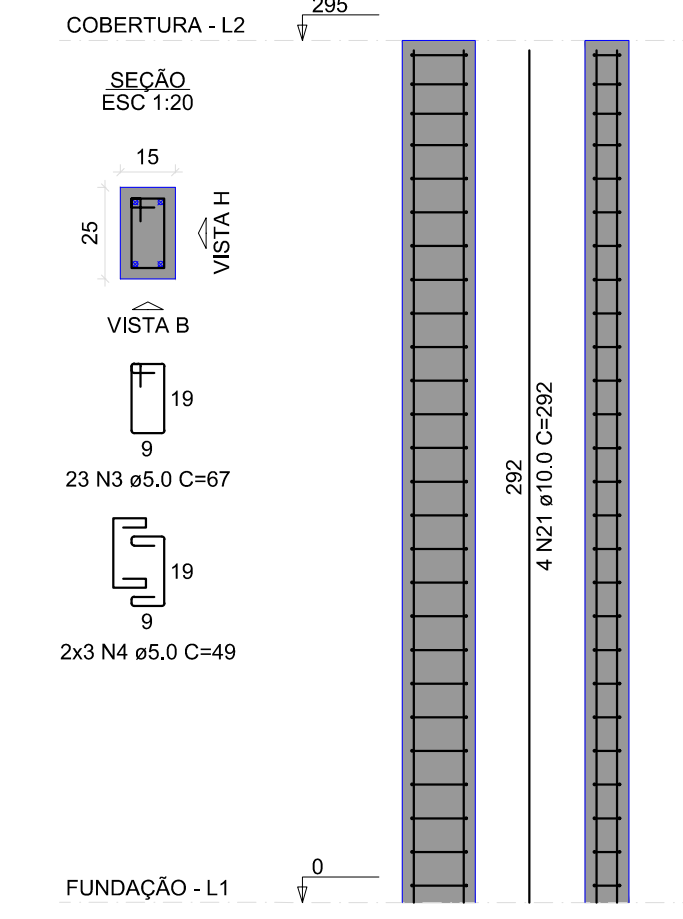
P7=P24



P8=P16=P19=P21



P9=P13



RELAÇÃO DO AÇO

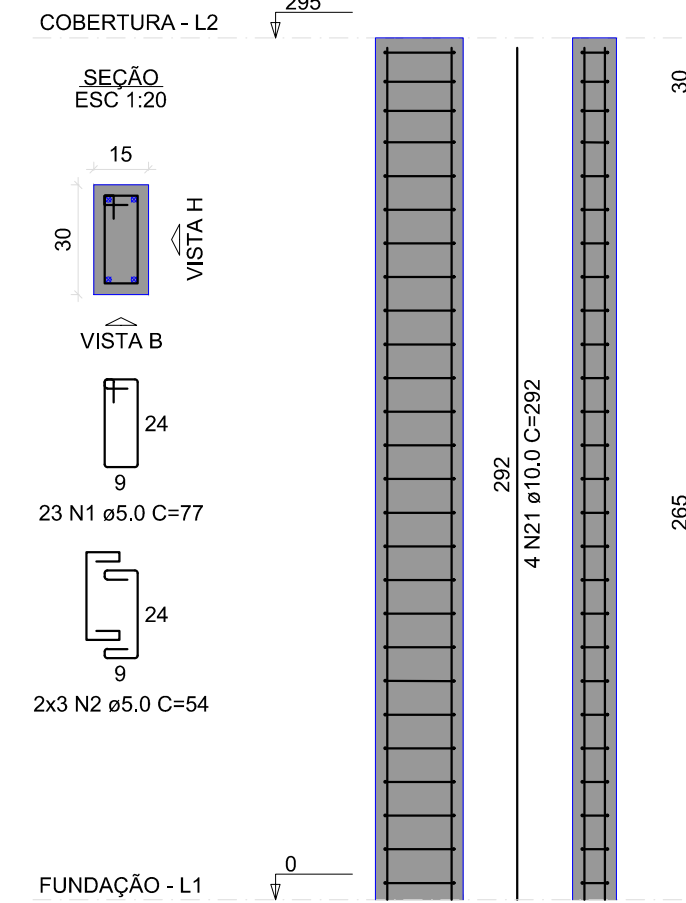
AÇO	N	DIAM (mm)	QUANT	C.UNIT (cm)	C.TOTAL (cm)
CA60	1	5.0	535	77	41195
	2	5.0	125	54	6804
	3	5.0	253	67	16951
	4	5.0	60	49	2940
	5	5.0	40	24	960
	6	5.0	18	87	1566
	7	5.0	4	59	236
	8	5.0	78	24	1872
	9	5.0	23	107	2461
	10	5.0	6	69	414
	11	5.0	18	97	1746
	12	5.0	4	64	256
	13	8.0	2	432	864
	14	8.0	2	462	924
	15	8.0	4	182	728
	16	8.0	2	424	848
	17	8.0	2	432	864
	18	8.0	2	167	334
	19	8.0	2	188	376
	20	10.0	98	333	32634
	21	10.0	40	292	11680
	22	12.5	6	292	1752
	23	12.5	6	342	2052

RESUMO DO AÇO

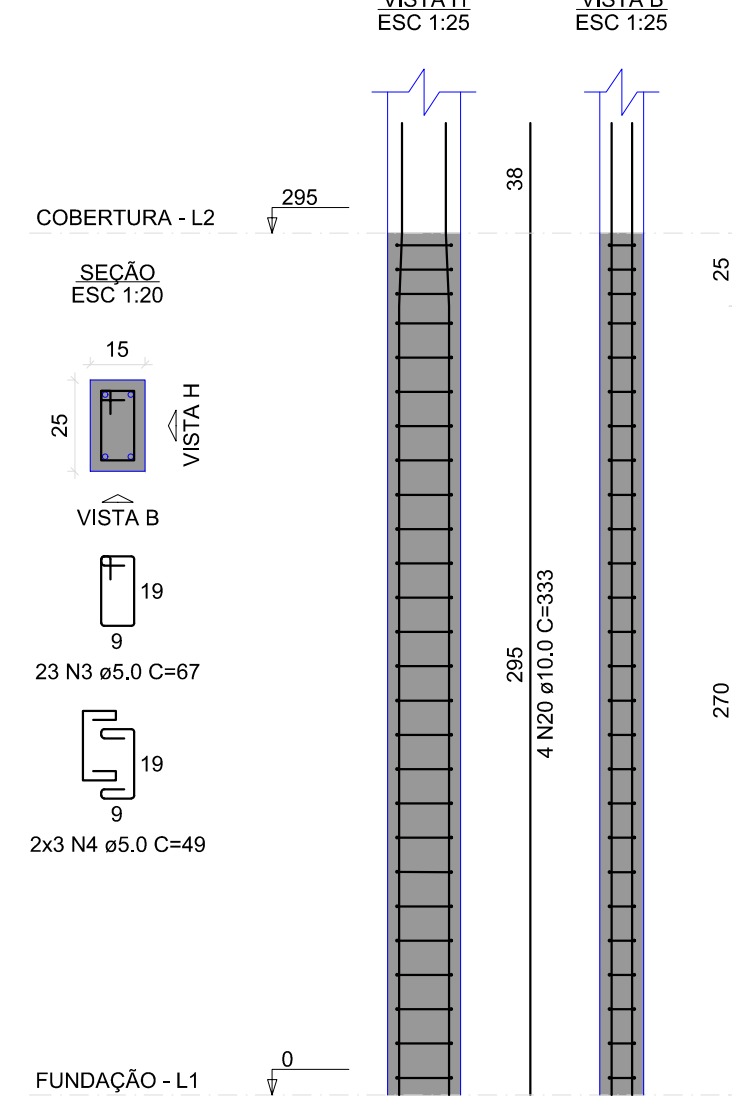
AÇO	DIAM (mm)	C.TOTAL (m)	PESO + 10% (kg)
CA50	8.0	49.4	21.4
	10.0	443.1	300.5
	12.5	38	40.3
CA60	5.0	774	131.2
PESO TOTAL (kg)			
CA50		362.3	
CA60		131.2	

Volume de concreto (C-25) = 4.95 m³
Área de forma = 97.89 m²

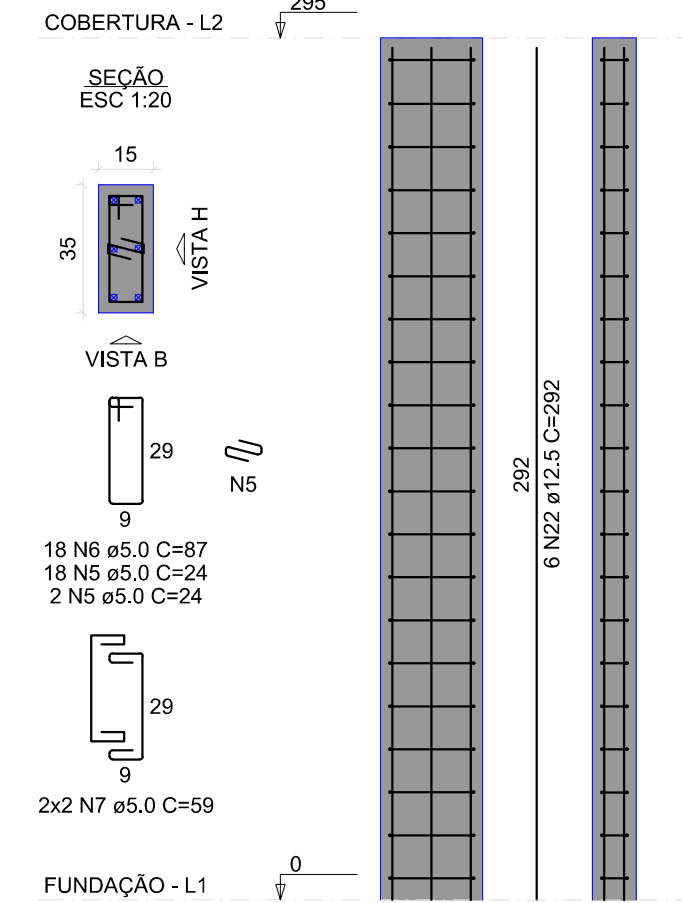
P12



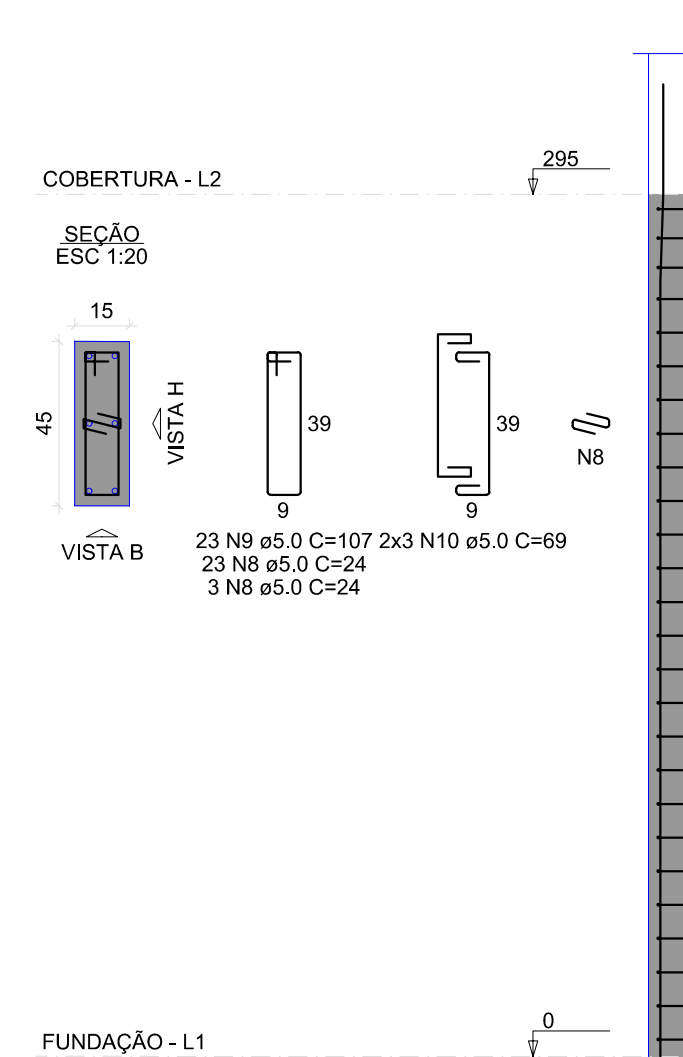
P14=P29=P30



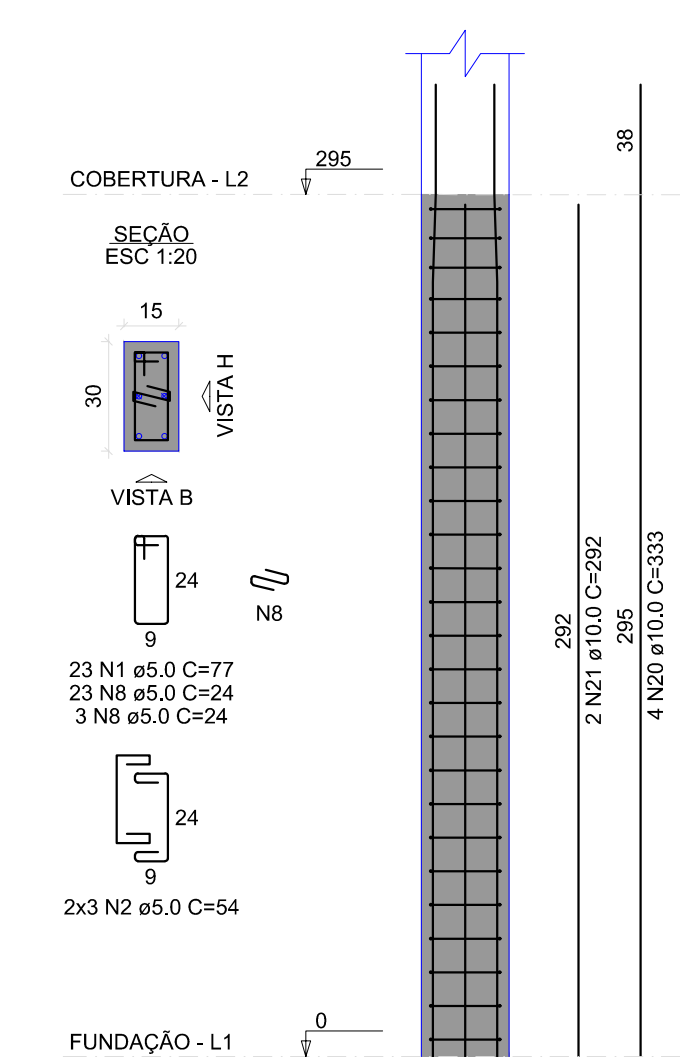
P20



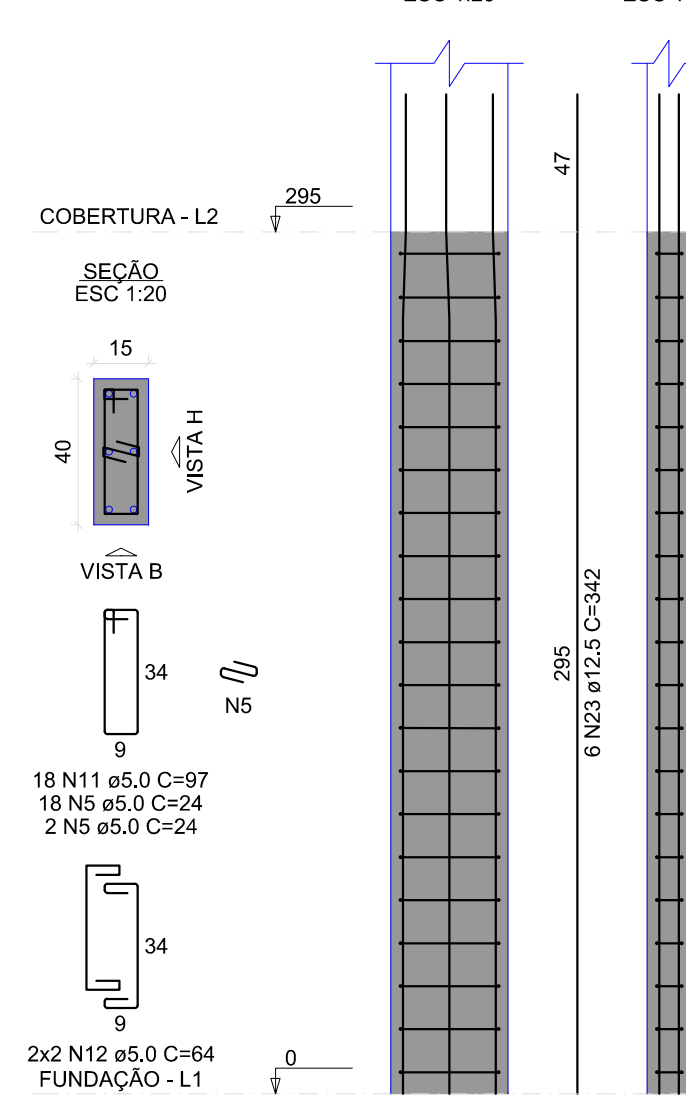
P26



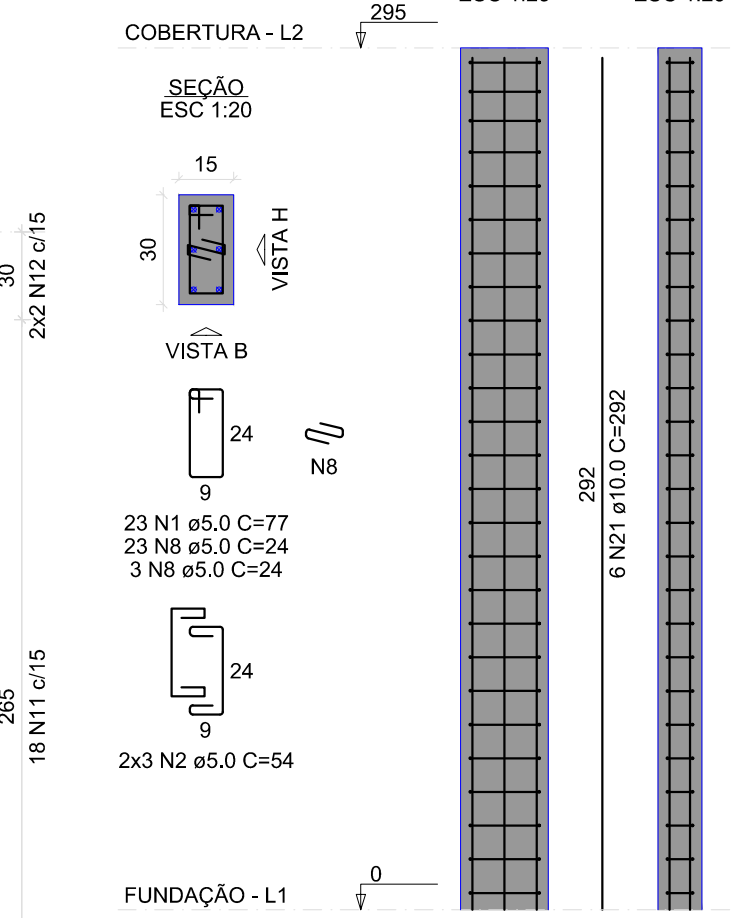
P28



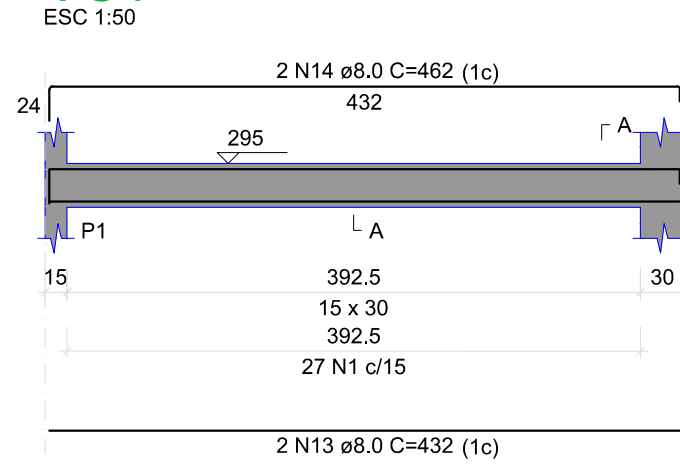
P31



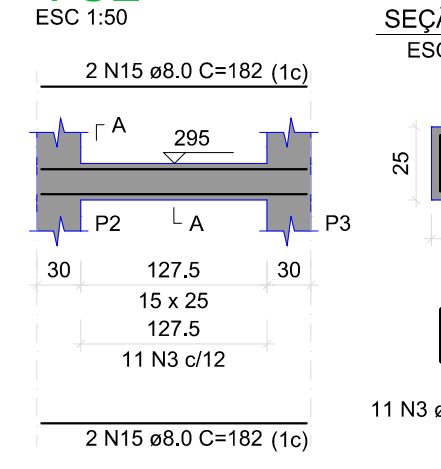
P32



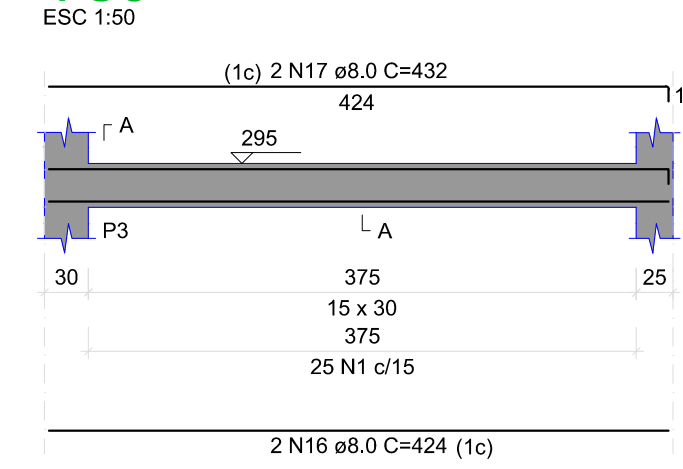
VC1



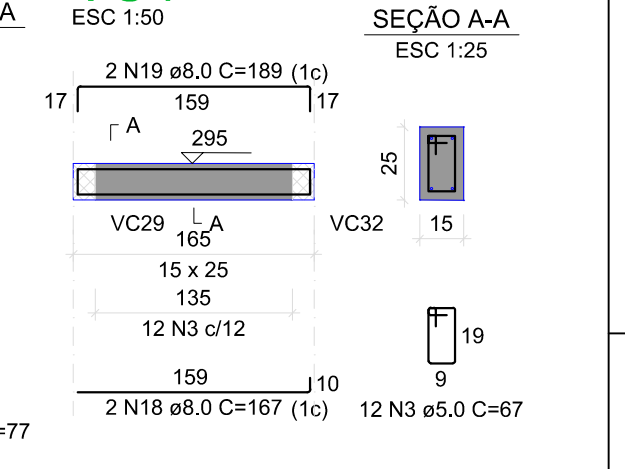
VC2



VC3



VC4



PROJETO: **PROJETO ESTRUTURAL** FOLHA: **5/7**

OBRA: CENTRO DE REFERÊNCIA DE ASSISTÊNCIA SOCIAL- CRAS
 PROPRIETÁRIO: PREFEITURA MUNICIPAL DE SÃO BENTO DO TOCANTINS
 CNPJ: 25.063.983/0001-36
 ENDEREÇO: TRAVESSA MANOEL RODRIGUES TOCANTINS, - CENTRO

QUADRO DE ÁREAS	ASSINATURA PROPRIETÁRIO	PREFEITURA MUNICIPAL DE SÃO BENTO DO TOCANTINS
AUTOR PROJETO 315.184/D-TO ENGENHEIRO CIVIL	FRANCISCO AUGUSTO DA S. VALENTIN	
RESP. TÉCNICO 315.184/D-TO ENGENHEIRO CIVIL	FRANCISCO AUGUSTO DA S. VALENTIN	

ESCALA: INDICADA DESENHO: FRANCISCO AUGUSTO DATA: FEVEREIRO DE 2020
 CONTEÚDO: DETALHES DA SUPERESTRUTURA