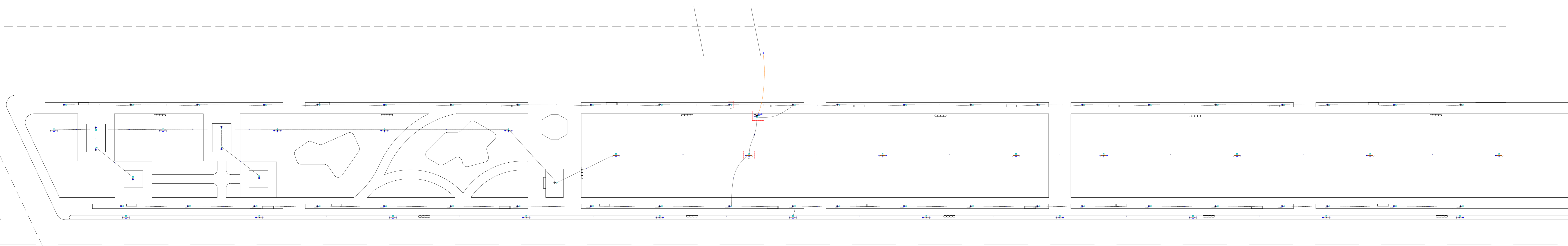
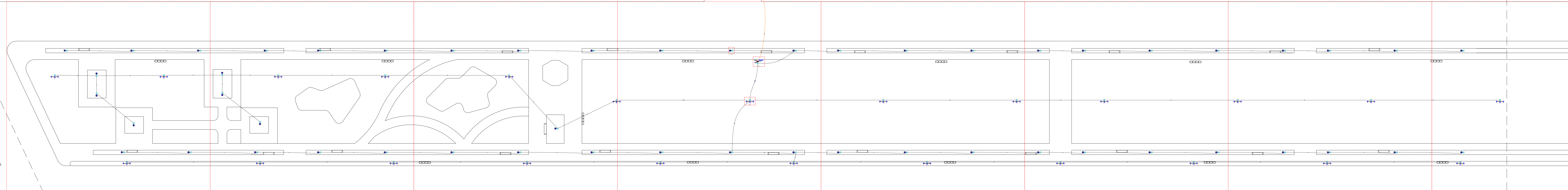


PROJETO ELÉTRICO

ESC: 1/300



DETALHAMENTO 01 DETALHAMENTO 02 DETALHAMENTO 03 DETALHAMENTO 04 DETALHAMENTO 05 DETALHAMENTO 06 DETALHAMENTO 07 DETALHAMENTO 08



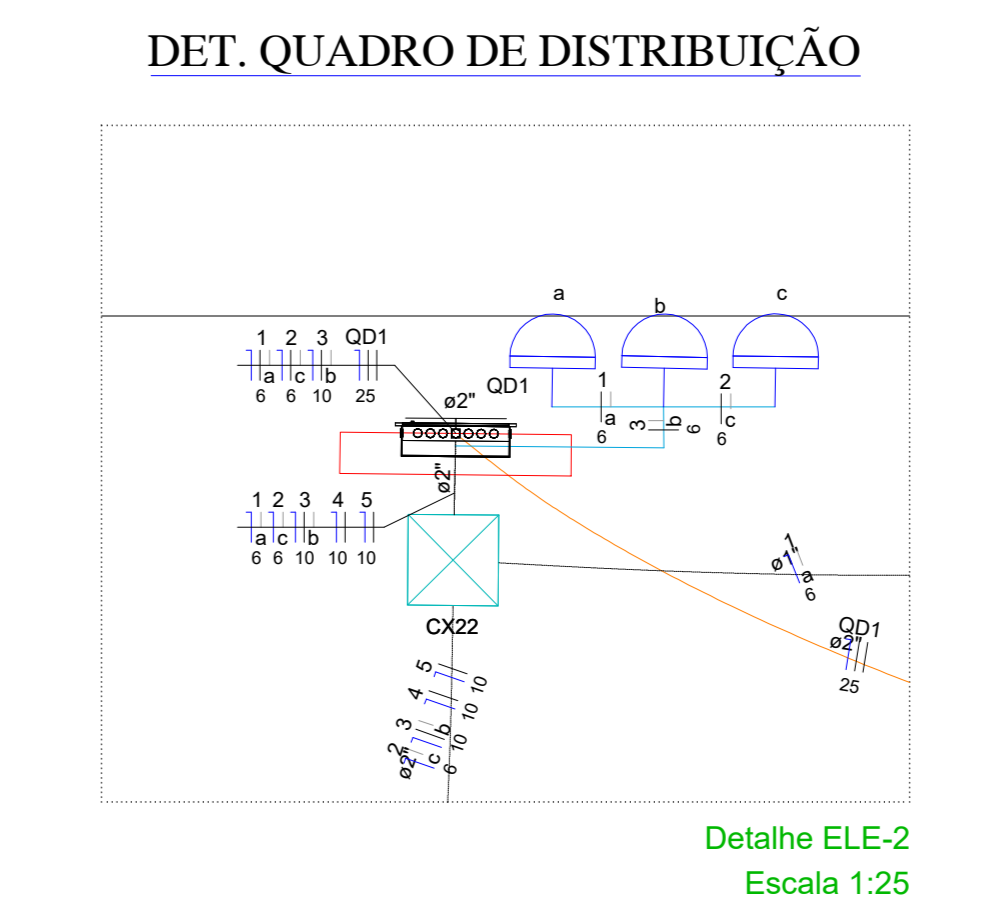
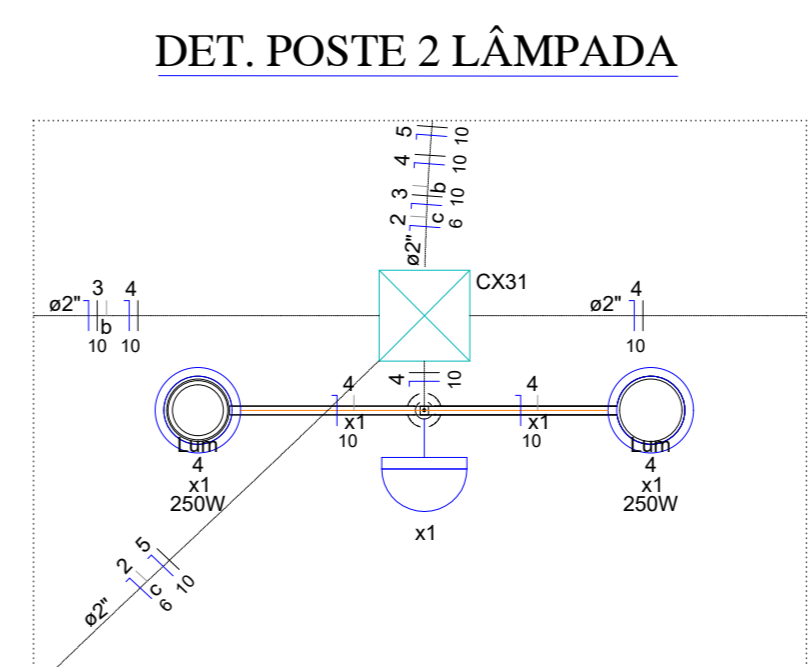
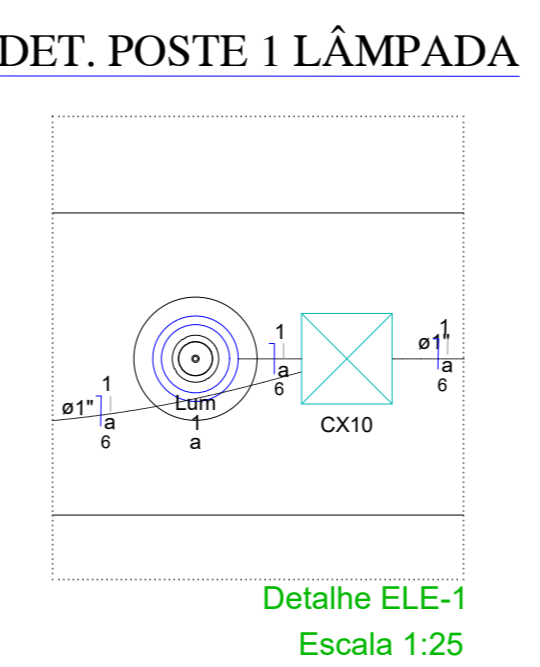
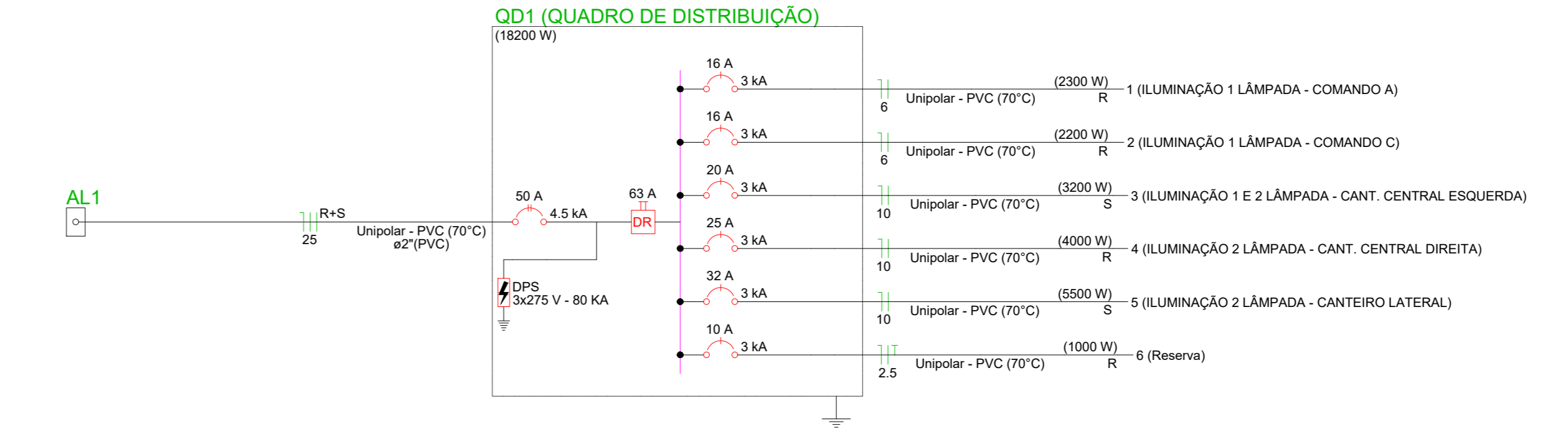
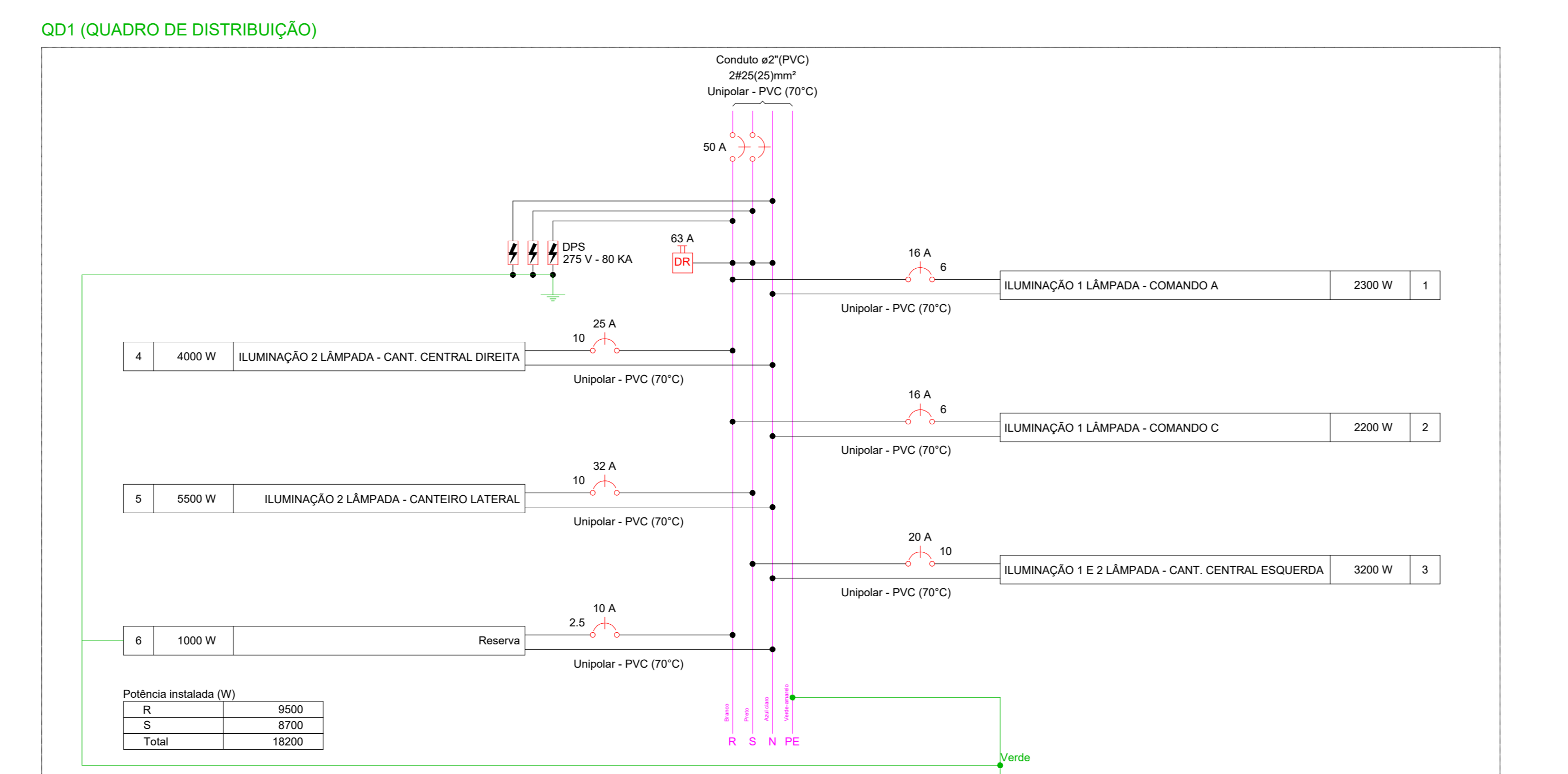
PLANTA SEÇÕES P/ ESCALA MAIOR

ESC: 1/300

Lista de materiais - Pavimento	
Cabo Unipolar (cobre)	
1x6 PVC - 0,61xV (ref. Intran Polivini Arichama)	871,38 m
6 mm ² - Amarelo	871,38 m
6 mm ² - Azul claro	871,38 m
6 mm ² - Branco	18 m
10 mm ² - Amarelo	285,99 m
10 mm ² - Azul claro	1111,17 m
10 mm ² - Branco	285,99 m
10 mm ² - Preto	718,76 m
25 mm ² - Azul claro	22,3 m
25 mm ² - Branco	22,3 m
25 mm ² - Preto	22,3 m
Caixa de passagem - embutir	
Alumínio	
300x300x100mm	77 pc
Tampa 300x300x50mm	77 pc
Dispositivo Elétrico - embutido	
Placa 2x4"	
Placa de furo	27 pc
Dispositivo de Comando	
Relé fotométrico	
220V - 1000W e/ fotocélula	27 pc
Dispositivo de Proteção	
Disjuntor Unipolar Termomagnético - norma DIN (Curva C)	
16 A - 3 kA	2 pc
20 A - 3 kA	1 pc
25 A - 3 kA	1 pc
32 A - 3 kA	1 pc
Disjuntor bipolar termomagnético (380 V/220 V) - DIN (Curva C)	
50 A - 4,5 kA	1 pc
Dispositivo de proteção contra surto	
275 V - 80 kA	3 pc
Interruptor tetrapolar DR (3 fases+neutro - In 30mA) - DIN	
63 A	1 pc
Eletroduto PVC flexível	
Eletroduto pesado	
3/4"	80 m
1"	688 m
1 1/2"	752,39 m
Eletroduto PVC ríscia	
Eletroduto, vara 3,0m	
1 1/2"	2 m
Luminária e acessórios	
Luminária Led externa	
Ledvance Floodlight alta potência 100W	52 pc
Ledvance Floodlight alta potência 250W	43 pc
Material p/ distribuição de circuitos	
Cabo cobre nu	
Seção 10mm ²	
Hasde de aterramento apolizobre	1 pc
Fusos concreto armado	1 pc
10 metros - Distribuição monofásicas	1 pc
Quadro distrib. chapa piratada - embutir	
Bar. bif. no Fuso+0kg, geral - UL (Ref. Cemar)	
Cap. 12,0kg, unip. - In barr. 100 A	1 pc

Legenda de condutas - Pavimento	
Elétrica	Deixa
	Tela
	Piso
Legenda das instalações - Pavimento	
Lum. Ledvance Floodlight alta potência 100W	
Lum. Ledvance Floodlight alta potência 250W	
Legenda - Pavimento	
Caixa de passagem 300x300x100 no piso	
Entrada de serviço	
Luminária LED 100W	
Luminária LED 250W	
Quadro de distribuição	
Relé Fotométrico	

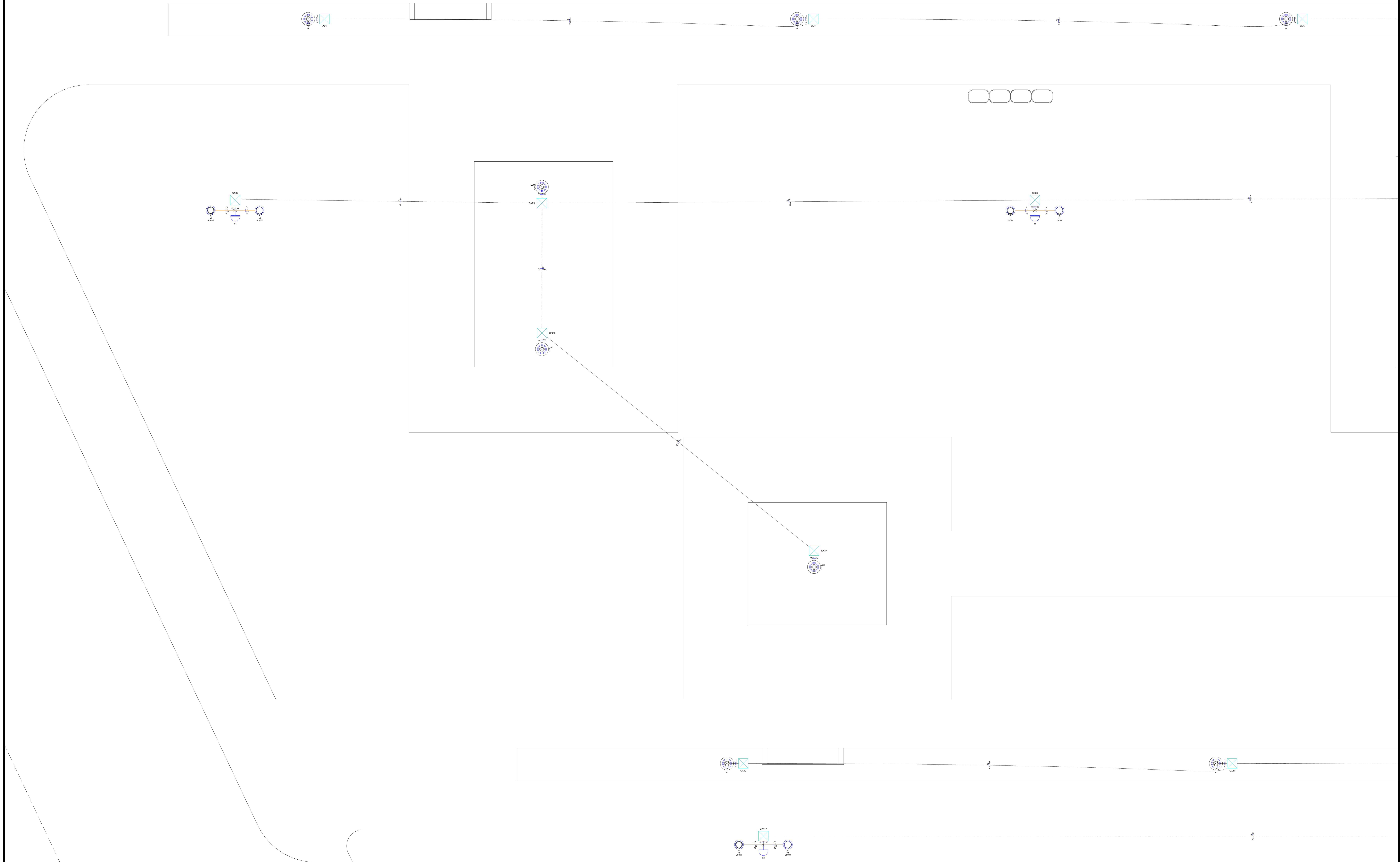
Quadro de Cargas (QD1) - Pavimento														
Circuito	Descrição	Esquema	Método de inst.	Tensão (V)	Pot. total (VA)	Pot. total (W)	Fases	Pot. - R (W)	Pot. - S (W)	Pot. - T (W)	FCT (%)	FCA (A)	In (A)	Ip (mm ²)
1	ILUMINAÇÃO 1 LÂMPADA - COMANDO A	F=N	B1	220 V	23	2556	R	2300		2300	1,00	0,60	19,4	11,8
2	ILUMINAÇÃO 1 LÂMPADA - COMANDO C	F=N	B1	220 V	22	2444	R	2200		2200	1,00	0,60	19,5	11,1
3	ILUMINAÇÃO 1 E 2 LÂMPADA - CANT. CENTRAL ESQUERDA	F=N	B1	220 V	7	3556	S	3200		3200	1,00	0,60	21,0	16,2
4	ILUMINAÇÃO 2 LÂMPADA - CANT. CENTRAL DIREITA	F=N	B1	220 V	16	4444	R	4000		4000	1,00	0,60	18,7	20,2
5	ILUMINAÇÃO 2 LÂMPADA - CANTERO LATERAL	F=N	B1	220 V	22	6111	S	5500		5500	1,00	0,60	46,3	27,8
6	Reserva	F=N-T	B1	220 V		1000	R	1000		1000	1,00	1,00	4,5	2,5
TOTAL					52	48	20111	18200	R+S	9500	8700	0	1,00	1,00



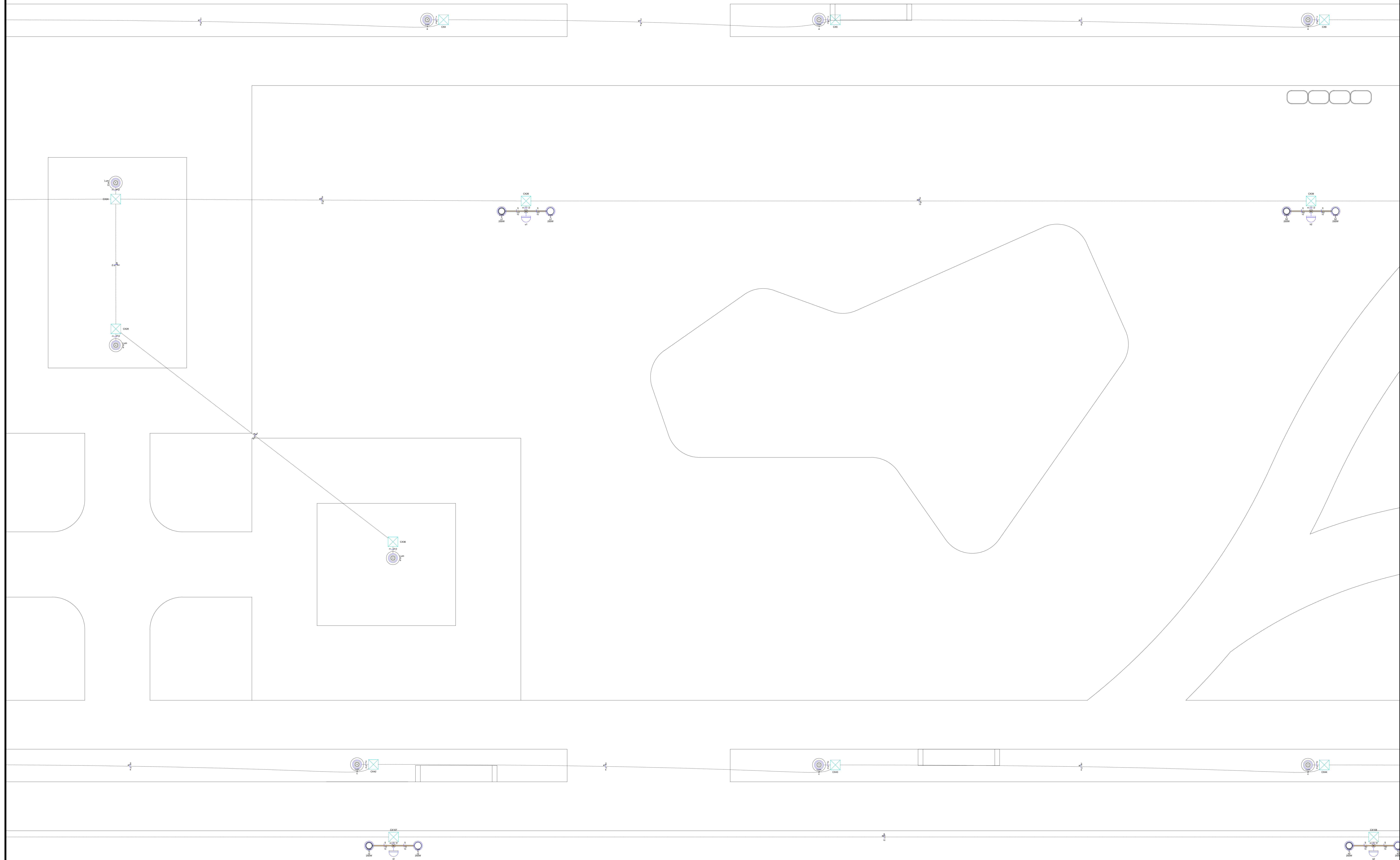
PREFEITURA	CREA	FOLHA: ÚNICA
PROJETO: ILUMINAÇÃO PÚBLICA		
OBRA: PAISAGISMO A MARGENS DA RODOVIA PROPRIETÁRIO: PREFEITURA MUNICIPAL DE SÃO BENTO - TO CNPJ: 25.063.983/0001-96 ENDEREÇO DA OBRA: MARGENS DA RODOVIA SÃO BENTO DO TOCANTINS		
QUADRO DE ÁREAS	ASSINATURA PROPRIETÁRIO PREFEITURA MUNICIPAL DE SÃO BENTO - TO	
	AUTOR PROJETO CAUFO/213.379-8 ARQUITETO URBANISTA GUSTAVO SILVA VELOSO	
	RESP. TÉCNICO	
ESCALA: INDICADA	DESENHO: FLÁVIO HUMBERTO	DATA: NOVEMBRO/2022
CONTEÚDO: ILUMINAÇÃO PÚBLICA - DETALHAMENTO ELÉTRICO		

LEGENDA DE POSTES	QUANTIDADE
POSTE DE JARIM - 2,50m (LED)	52 UNIDADES
POSTE BRAÇO DUPLO - 9M (LED)	24 UNIDADES
POSTE BRAÇO P/ RELE - 10M (LED)	01 UNIDADES

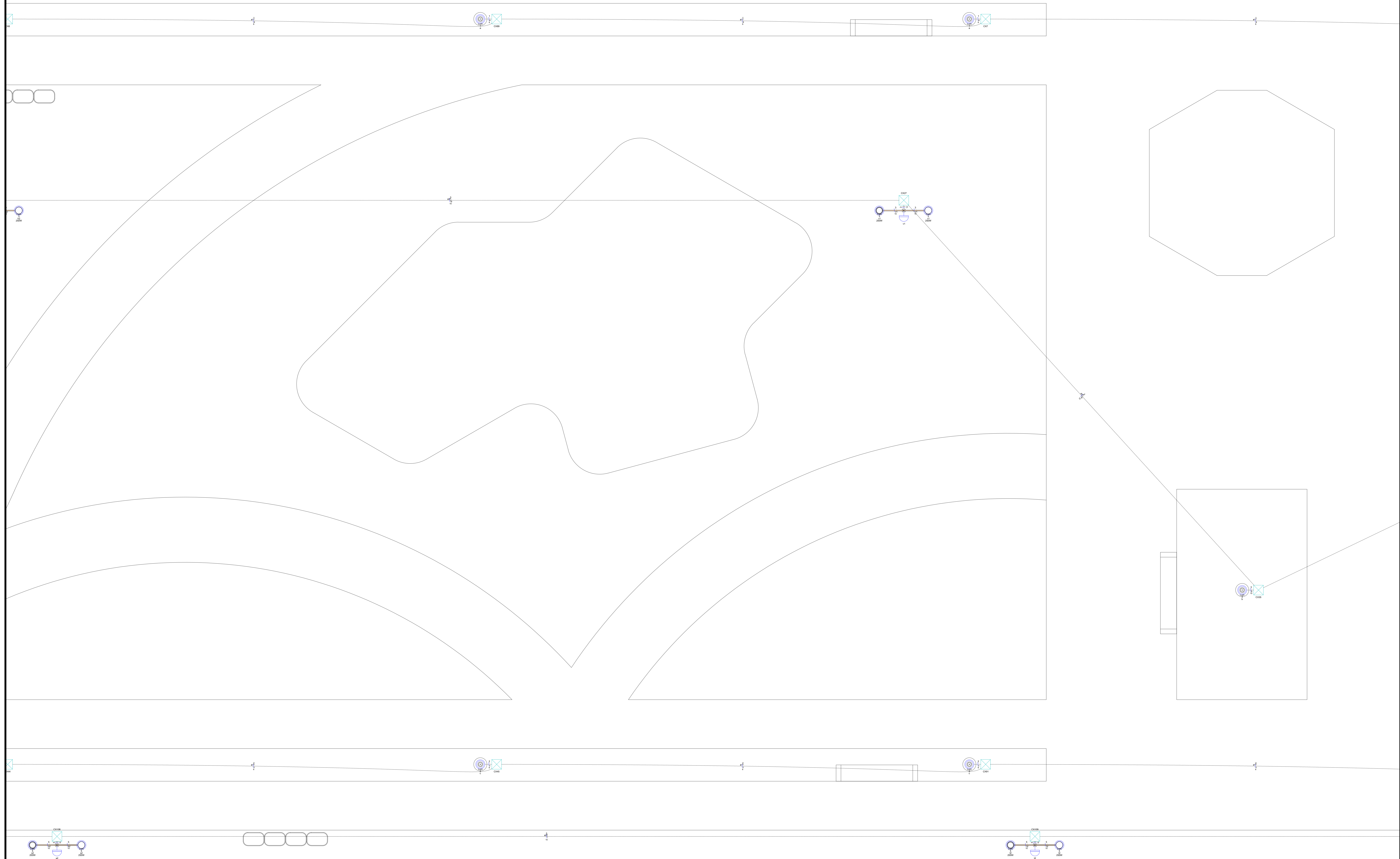
DETALHAMENTO 01



DETALHAMENTO 02



DETALHAMENTO 03



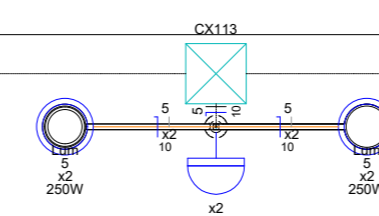
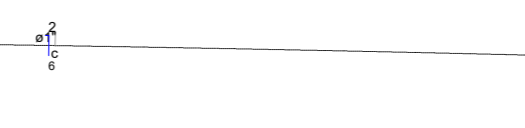
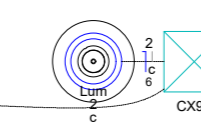
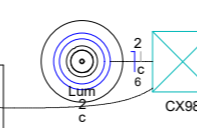
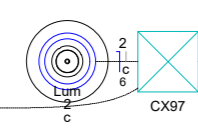
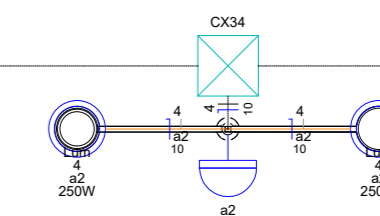
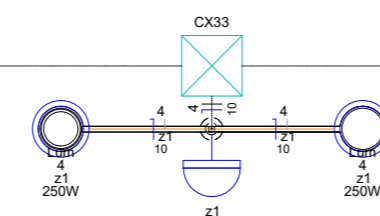
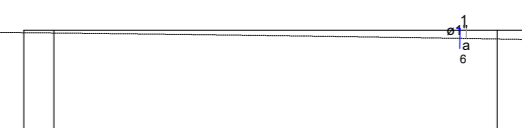
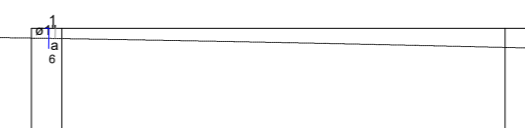
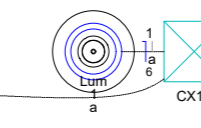
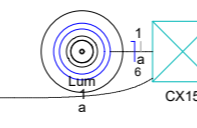
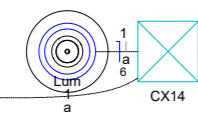
DETALHAMENTO 04



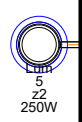
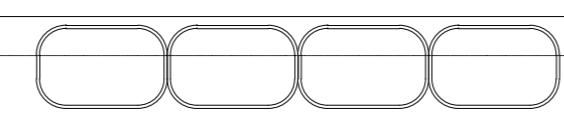
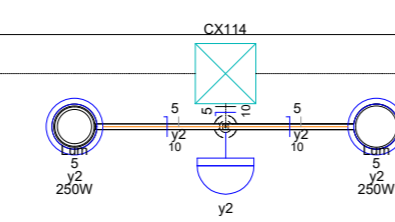
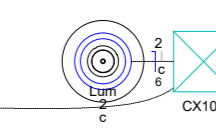
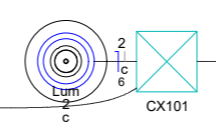
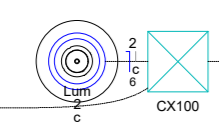
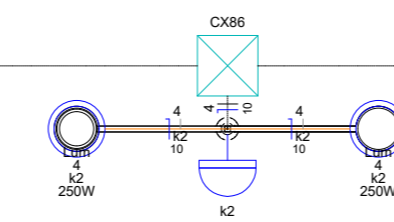
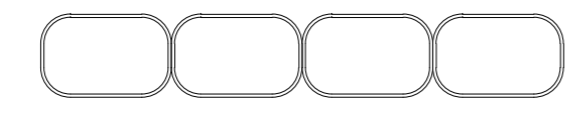
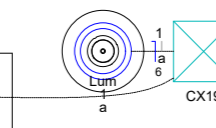
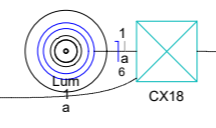
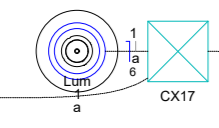
DETALHAMENTO 05



DETALHAMENTO 06



DETALHAMENTO 07



DETALHAMENTO 08

