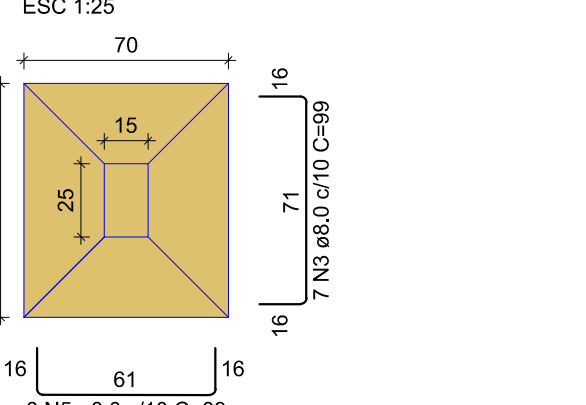


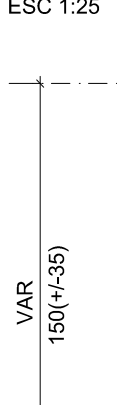
S2=S3=S10=S15=S16=S17=S18=S20

PLANTA ESC 1:25



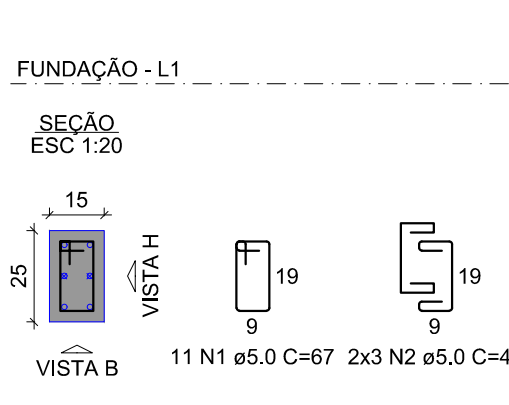
VAR 150(+35)
Solo com capacidade de suporte > 1,50 kgf/cm²
Solo compactado sobre a sapata
peso específico > 1600,00 kg/m³

CORTE ESC 1:25



P10

FUNDAÇÃO - L1

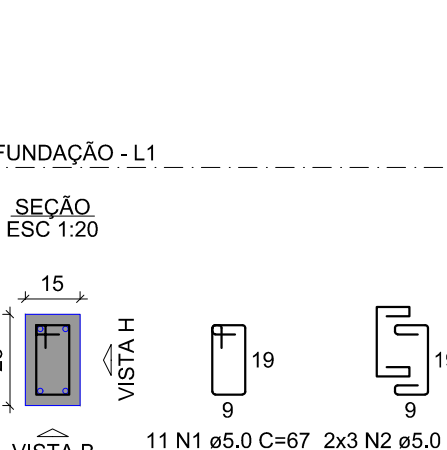


VISTA H ESC 1:25

VISTA B ESC 1:25

P2=P15=P16=P17=P18=P20

FUNDAÇÃO - L1

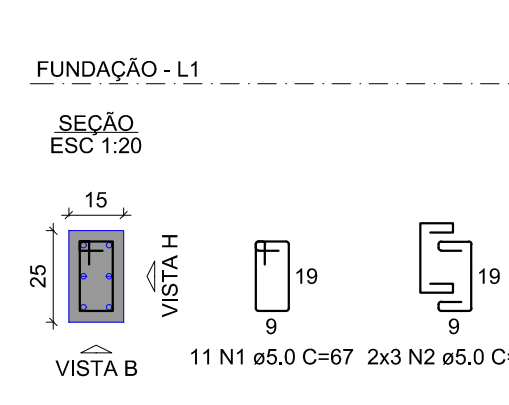


VISTA H ESC 1:25

VISTA B ESC 1:25

P3

FUNDAÇÃO - L1



VISTA H ESC 1:25

VISTA B ESC 1:25

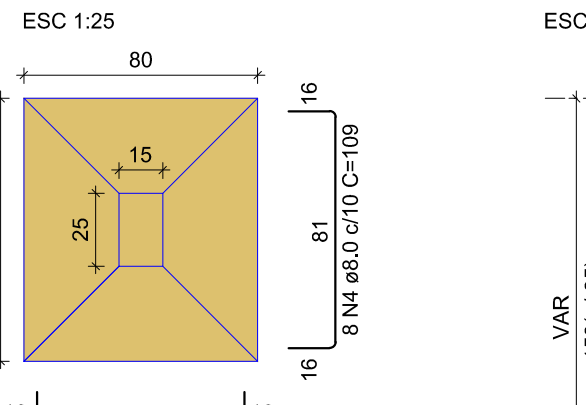
RELAÇÃO DO AÇO

Table with columns: AÇO, N, DIAM (mm), QUANT, C.UNIT (cm), C.TOTAL (cm). Lists steel specifications for various parts.

Table with columns: AÇO, DIAM (mm), C.TOTAL (m), PESO + 10% (kg). Summary of steel quantities and weights.

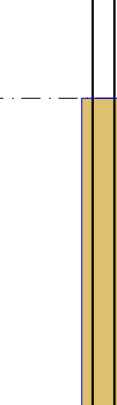
S6=S7=S8=S11=S13=S21

PLANTA ESC 1:25



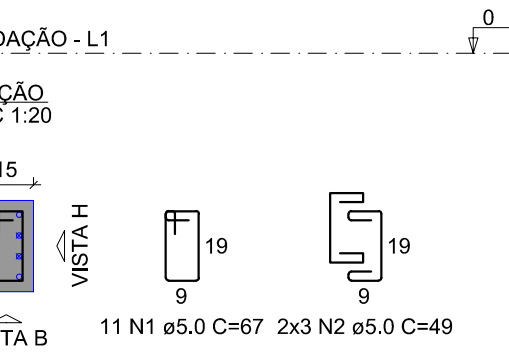
VAR 150(+35)
Solo com capacidade de suporte > 1,50 kgf/cm²
Solo compactado sobre a sapata
peso específico > 1600,00 kg/m³

CORTE ESC 1:25



P11

FUNDAÇÃO - L1

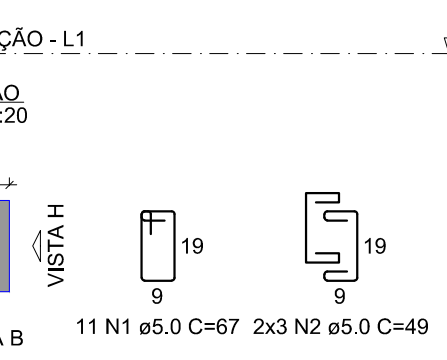


VISTA H ESC 1:25

VISTA B ESC 1:25

P21

FUNDAÇÃO - L1

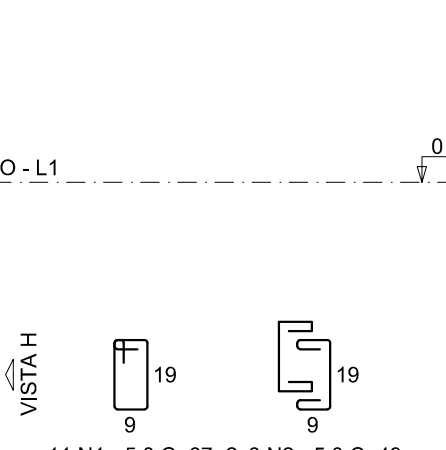


VISTA H ESC 1:25

VISTA B ESC 1:25

P6=P7=P8=P13

FUNDAÇÃO - L1

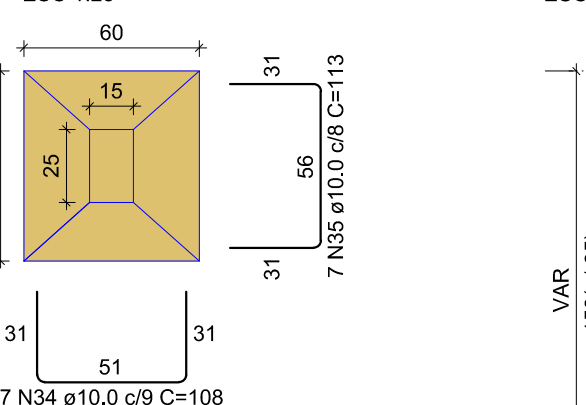


VISTA H ESC 1:25

VISTA B ESC 1:25

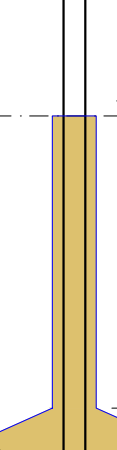
S22

PLANTA ESC 1:25



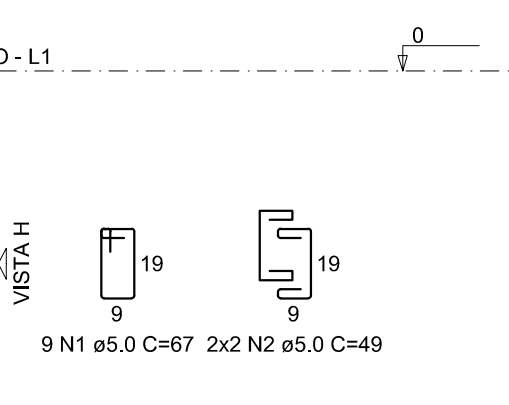
VAR 150(+35)
Solo com capacidade de suporte > 1,50 kgf/cm²
Solo compactado sobre a sapata
peso específico > 1600,00 kg/m³

CORTE ESC 1:25

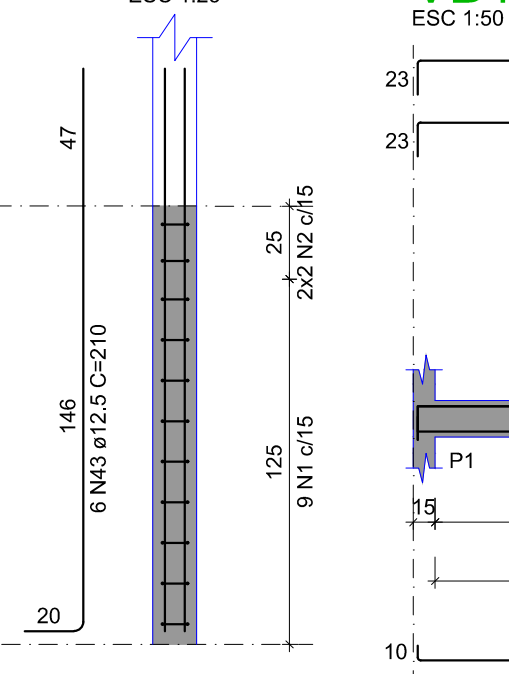


P22

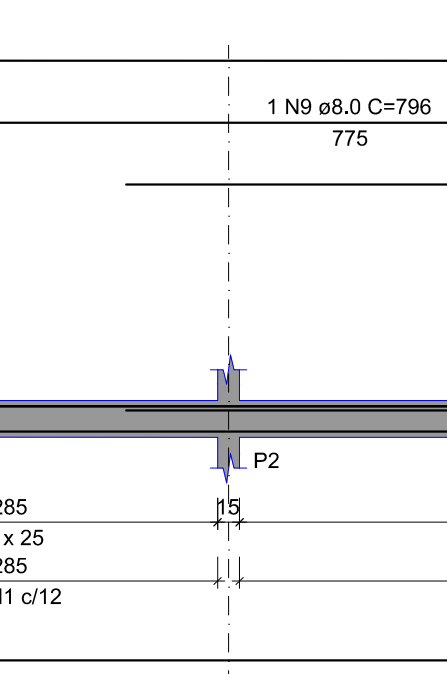
FUNDAÇÃO - L1



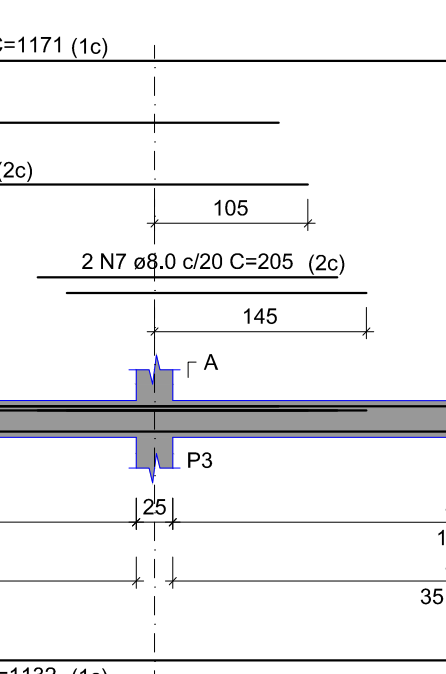
VB1 ESC 1:50



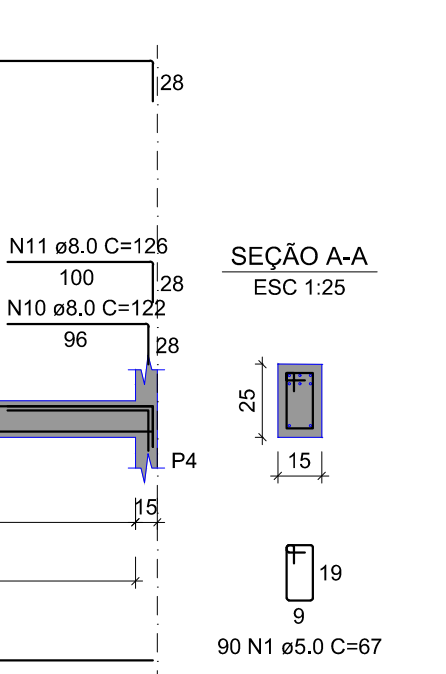
VB3 ESC 1:50



VB4 ESC 1:50



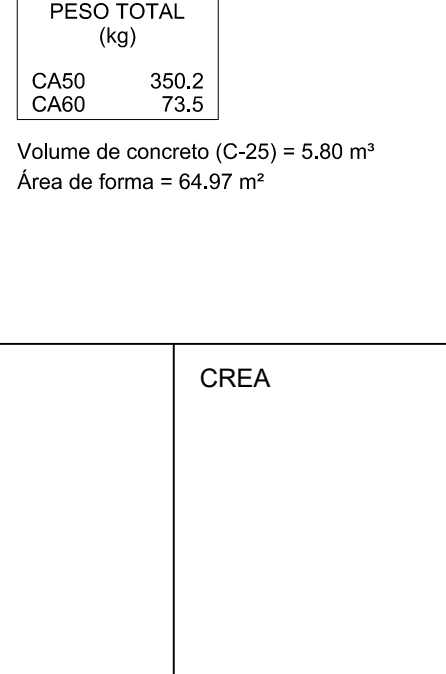
VB6 ESC 1:50



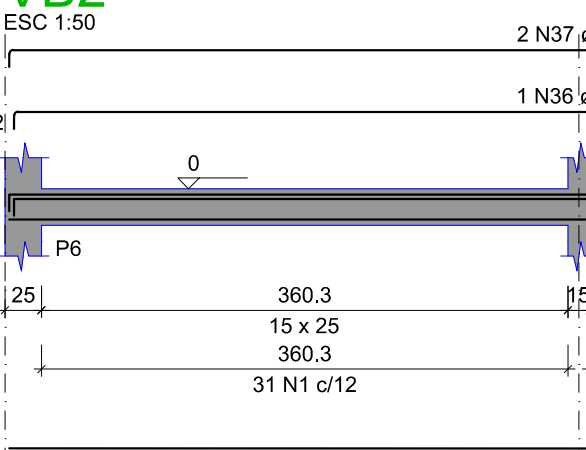
VB7 ESC 1:50



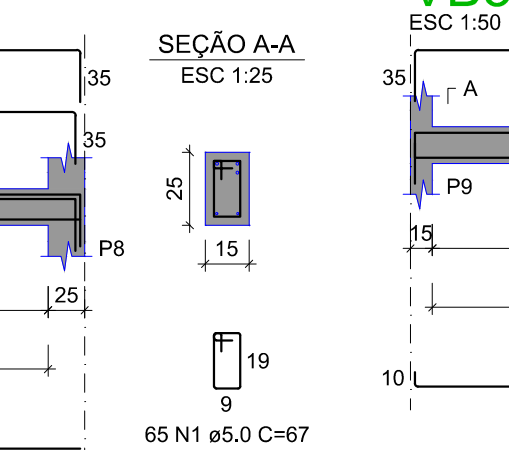
VB8 ESC 1:50



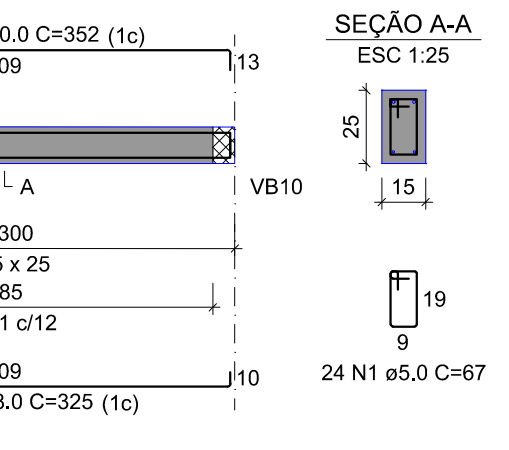
VB2 ESC 1:50



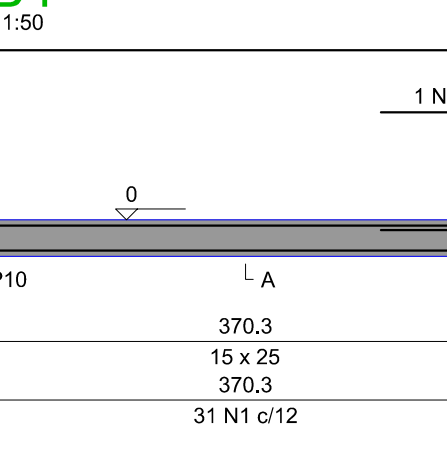
VB5 ESC 1:50



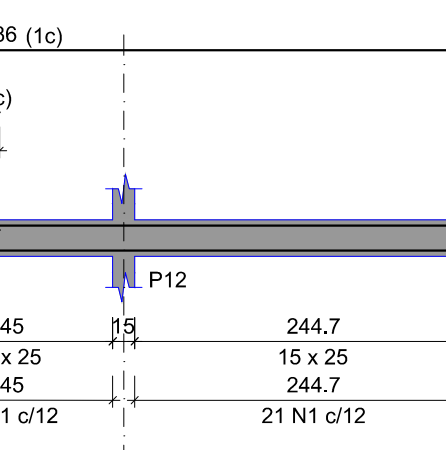
VB3 ESC 1:50



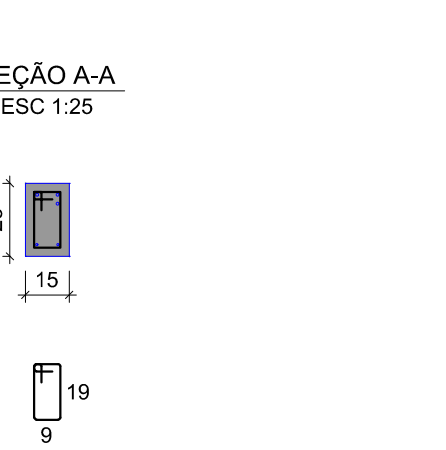
VB4 ESC 1:50



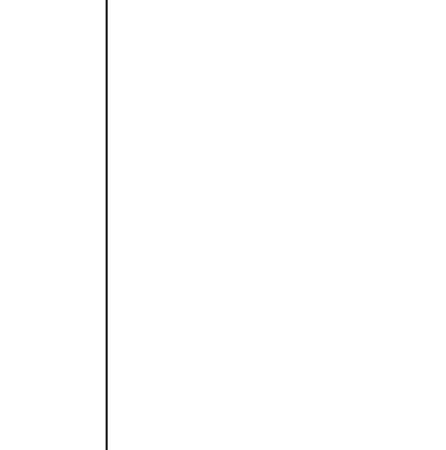
VB6 ESC 1:50



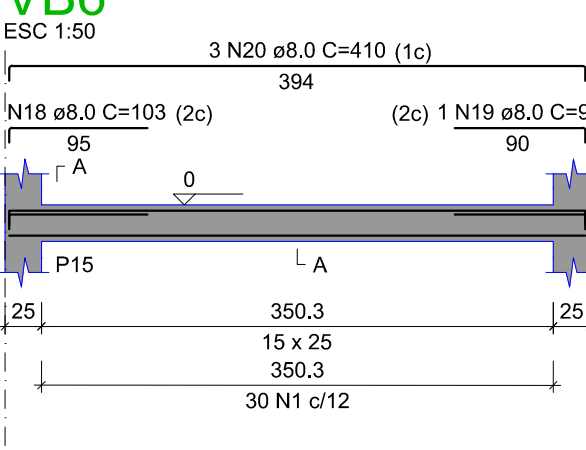
VB7 ESC 1:50



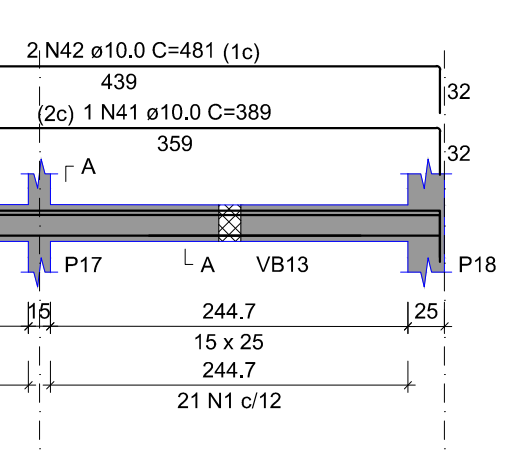
VB8 ESC 1:50



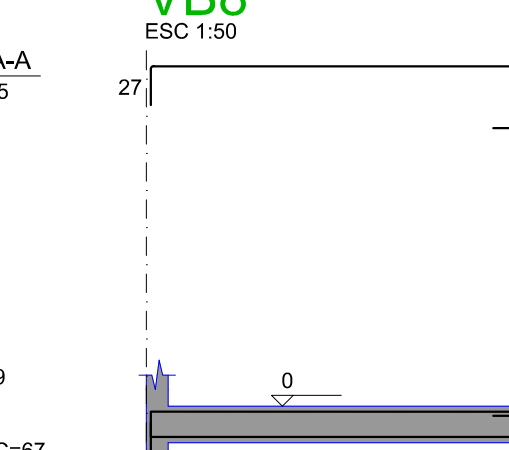
VB6 ESC 1:50



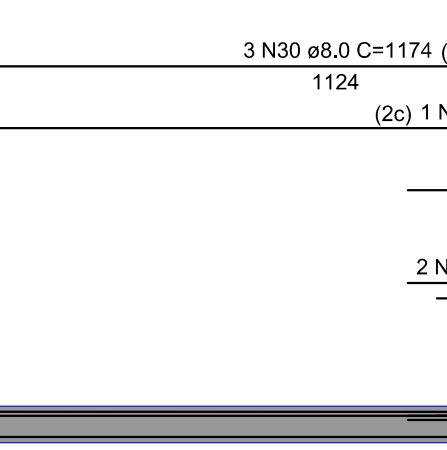
VB7 ESC 1:50



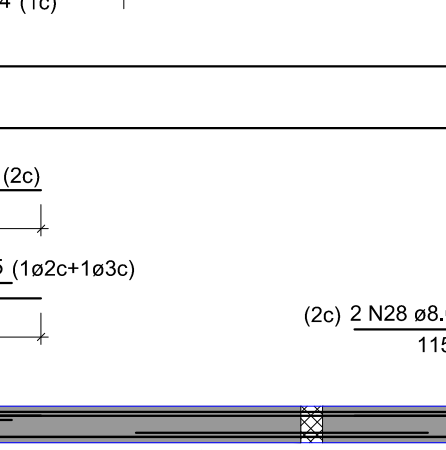
VB8 ESC 1:50



VB5 ESC 1:50



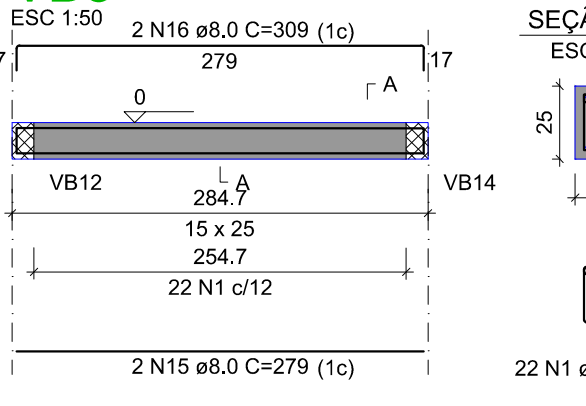
VB8 ESC 1:50



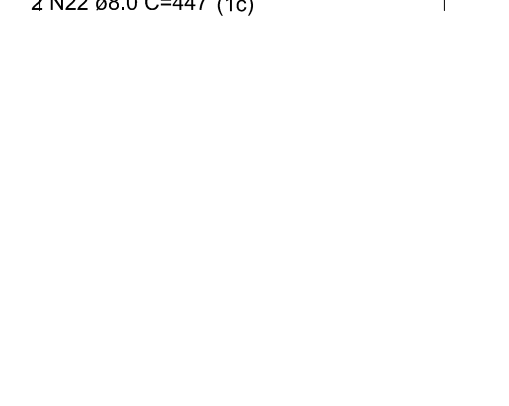
VB5 ESC 1:50



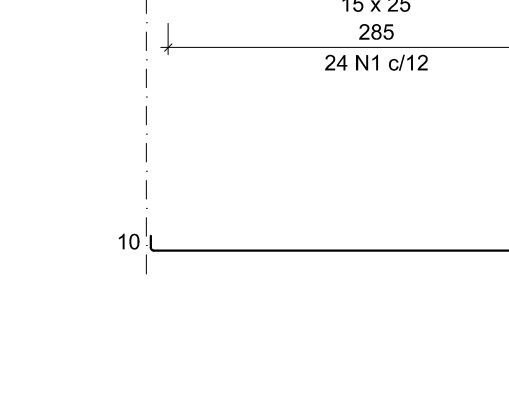
VB5 ESC 1:50



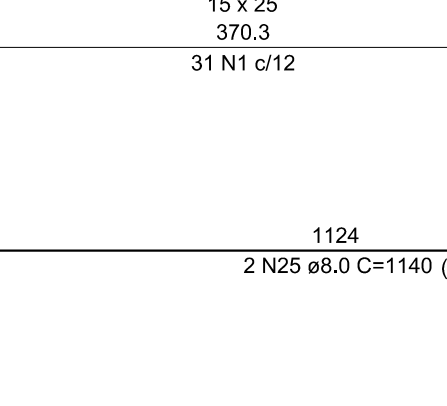
VB11 ESC 1:50



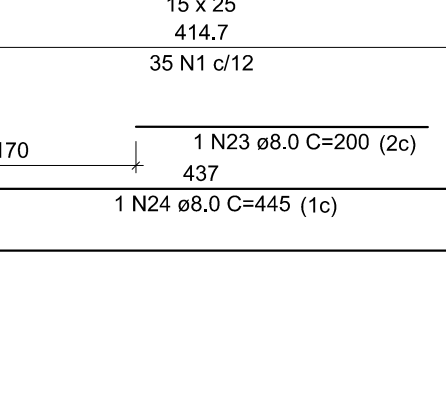
VB12 ESC 1:50



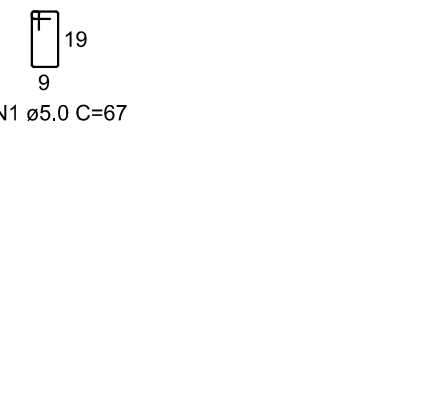
VB13 ESC 1:50



VB14 ESC 1:50



VB15 ESC 1:50



Project information block including: PREFEITURA, CREA, PROJETO: PROJETO ESTRUTURAL 2/4, OBRA: CASA DE FARINHA, PROPRIETÁRIO: PREFEITURA MUNICIPAL DE SÃO BENTO DO TOCANTINS, and a table with ASSINATURA, AUTOR PROJETO, RESP. TÉCNICO, ESCALA, and CONTEUDO.